

SPECIALTY VENUES

EVENT GUIDE



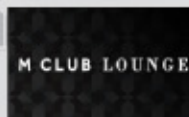
780 MISSION STREET • SAN FRANCISCO, CA 94103 • P 415.896.1600 • SFMARRIOTT.COM

EVENTS BY



THE VIEW

SoMa



LUXURY SUITES



SoMa



LUXURY SUITES

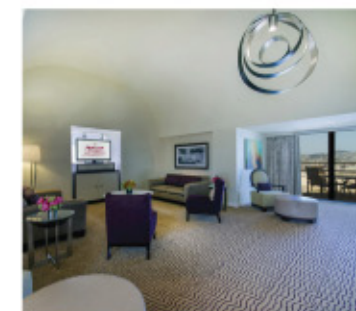
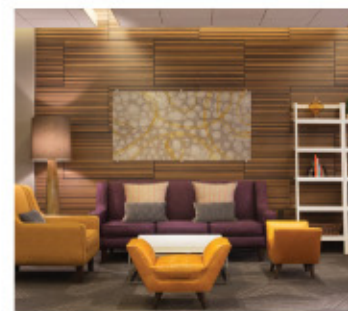
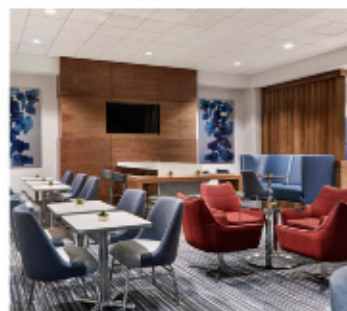
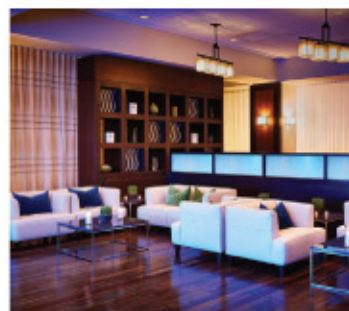
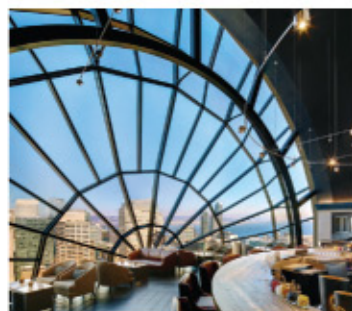
AM and PM events
Event Capacity: 300 pp
Reception or Dining Space
Upscale Cocktail Lounge with Music
Panoramic Views of San Francisco
Permanent furniture and bar
Located on the 39th Floor

AM and PM Events
Event Capacity: 200 pp
Reception or Dining Space
with Music
Multiple Flat Screen TVs
Located on the 2nd Floor

AM and PM Events
Events Capacity: 150 people
Reception, Dining & Meeting Space
Fully Private Executive Lounge &
Dining Space with Music
Multiple Flat Screen TVs
Permanent Furniture, Buffet & Bar
Located on the 2nd Floor

AM and PM events
Event Capacity: 120 pp
Reception or Dining Space
Casual Lobby Bar with Music
Multiple Flat Screen TVs
Permanent furniture and bar
Located on the Lobby Level

AM and PM events
Event Capacity: 25 - 125 pp
Reception, Dining, Meeting Space
Private Luxury Suites
Panoramic Views of Downtown SF
Permanent furniture
Located in the high rise building



At the San Francisco Marriott Marquis we feature a variety of options for your private event. Whether it is one of our outlet restaurants or one of our ultra-hip luxury suites, the San Francisco Marriott Marquis has a setting for your exclusive gathering.



Please inquire with Vanessa Flores at vanessa.flores@marriott.com for current rates and availability.

EVENING EVENTS BY



VIEW LOUNGE BUYOUTS:

Enjoy exclusive use of the entire View Lounge for your event. Our signature venue has been newly renovated with modern design features and a state of the art lighting and sound system.

Half Night Buyout:

- 4pm-8pm or 9pm-1am
- Space capacity: 300 guests
- Standard Reception Set

Full Night Buyout:

- Exclusive use of the View Lounge from 4pm-1am
- Space capacity: 300 guests
- Standard Reception Set

TWIN PEAK'S SIDE BUYOUT: 2 HOUR EVENT

Soak in exquisite sunset views from our Twin Peak's side windows. Rent half of the View Lounge for events ranging from 50-110 guests.

- 2 Hour Event
- Space capacity: 110 guests
- Standard Reception Set

ALCOVE RESERVATION:

For more intimate events, book one of our 3 semi private alcove spaces for groups of 15-30 guests.

- 2 Hour Event
- Space Capacity: 30 guests
- Standard Reception Set

FURNITURE MOVING/ RELOCATION FEES:

\$1,000 - \$10,000

ATTENDANT FEE SUMMARY:

If applicable: (1) Bartender Fee(s) (up to Three Hours) at \$375 per Bartender. (1) Attendant Fee(s) (up to Three Hours) at \$375 per Attendant. (1) Additional Hour(s) charged \$125 Per Hour/Per Bar-tender/Attendant.



Please inquire with Vanessa Flores at vanessa.flores@marriott.com for current rates and availability.



DAYTIME EVENTS BY



DAYTIME EVENTS IN THE VIEW LOUNGE:

Enjoy exclusive use of the entire View Lounge for your breakfast, lunch or meeting. Soak in the gorgeous daytime views of San Francisco and local landmarks from any one of our panoramic windows. Our signature venue has been newly renovated with modern design features and a state of the art lighting and sound system.

Bay Side Buyout:

- 2 Hour Event
- 190 max capacity
- 100 seated capacity
- Standard Set

View Lounge Buyout:

- 2 Hour Event
- 300 max capacity
- 200 seated capacity
- Standard Set

FURNITURE MOVING/RELOCATION FEES:

\$1,000 to \$10,000

ATTENDANT FEE SUMMARY:

If applicable: (1) Bartender Fee(s) (up to Three Hours) at \$375 per Bartender. (1) Attendant Fee(s) (up to Three Hours) at \$375 per Attendant. (1) Additional Hour(s) charged \$125 Per Hour/Per Bar-tender/Attendant.



Please inquire with Vanessa Flores at vanessa.flores@marriott.com for current rates and availability.

EVENTS BY SoMa

AFTERNOON AND EVENING EVENTS IN SoMa:

Host your next lunch, dinner, reception or meeting in our SoMa event space. This convertible event space showcases a modern design with numerous theme and upgrade options.

Full Buyout:

- 2 Hour Event
- Space capacity: 225 guests
- Standard Reception or Meal Set

Half Buyout:

- 2 Hour Event
- Space capacity: 100 guests
- Standard Reception or Meal Set

FURNITURE MOVING/RELOCATION FEES:

\$1,000 to \$7000

ATTENDANT FEE SUMMARY:

If applicable: (1) Bartender Fee(s) (up to Three Hours) at \$375 per Bartender.
(1) Attendant Fee(s) (up to Three Hours) at \$375 per Attendant. (1) Additional Hour(s) charged \$125 Per Hour/Per Bar-tender/Attendant.



Please inquire with Vanessa Flores at vanessa.flores@marriott.com for current rates and availability.



EVENTS BY

M CLUB LOUNGE

ALL DAY EVENTS IN THE M LOUNGE:

Host your next breakfast, lunch, dinner or reception in our newly renovated M Lounge. This sleek and modern location will create the inviting atmosphere required for your next signature event.

Full Buyout:

- 2 Hour Event
- Space capacity 150
- Standard Reception or Dining Set Up

FURNITURE MOVING/RELOCATION FEES:

\$1,000 to \$7000

ATTENDANT FEE SUMMARY:

If applicable: (1) Bartender Fee(s) (up to Three Hours) at \$375 per Bartender.
(1) Attendant Fee(s) (up to Three Hours) at \$375 per Attendant. (1) Additional Hour(s) charged \$125 Per Hour/Per Bar-tender/Attendant.



Please inquire with Vanessa Flores at vanessa.flores@marriott.com for current rates and availability.



EVENTS BY **BIN 55**

CHILL ZONE EVENTS HOSTED BY BIN 55:

Host your team's happy hour, client reception or networking event with us in Bin 55. Enjoy the vibrant atmosphere of Bin 55's newly renovated Chill Zone social lounge. The Chill Zone is the perfect venue for intimate cocktail receptions in a stylized environment.

Chill Zone Buyout:

- 2 Hour Event
- Space capacity: 120 guests
- Standard Reception Set

Chill Zone Section:

- 2 Hour Event
- Space capacity: 40 guests
- Standard Reception Set

FURNITURE MOVING/RELOCATION FEES:

\$1,000 to \$5,000

ATTENDANT FEE SUMMARY:

If applicable: (1) Bartender Fee(s) (up to Three Hours) at \$375 per Bartender.
(1) Attendant Fee(s) (up to Three Hours) at \$375 per Attendant. (1) Additional Hour(s) charged \$125 Per Hour/Per Bar-tender/Attendant.



Please inquire with Vanessa Flores at vanessa.flores@marriott.com for current rates and availability.



EVENTS BY LUXURY SUITES

EVENTS IN LUXURY SUITES:

Spoil yourself with a catered event in one of our elegant Luxury Suites. These fully renovated suites enjoy expansive views of our beautiful city, and even some from their own panoramic balconies! Perfect for intimate receptions and social gatherings. A full night's stay is always included in each Luxury Suite event.

The type of suites we offer are:

Super Presidential: 125 guest capacity

Presidential Suite: 100 guest capacity

Vice Presidential Suite: 75 guest capacity

3 Bay Hospitality Suites: 55 guest capacity.

2 Bay Hospitality Suites: 40 guest capacity.

LUXURY SUITE RENTAL PRICES:

Price Range from \$499+

FOOD & BEVERAGE MINIMUM:

\$1000++ per 20 guests

SET UP FEE:

Tables (6'x18", 6'x30", 8'x18", 8'x30")

\$50 per table

Chairs (Gold or Green)

\$5 per chair

FURNITURE MOVING/RELOCATION FEES:

\$1,000 to \$5,000

ATTENDANT FEE SUMMARY:

If applicable: (1) Bartender Fee(s) (up to Three Hours) at \$375 per Bartender.
(1) Attendant Fee(s) (up to Three Hours) at \$375 per Attendant. (1) Additional Hour(s) of Bartender Service at \$125 Per Hour/Per Bartender. (1) Additional Hour(s) of Attendant Service at \$125 Per Hour/Per Attendant.



Please inquire with Vanessa Flores at vanessa.flores@marriott.com for current rates and availability.



EVENTS AT THE MARQUIS

CONTACT:

Vanessa Flores, 415.442.6794, vanessa.flores@marriott.com

BOOKING POLICY:

In order to hold and secure any event space, a signed credit card authorization is required at time of booking. A full, pre-paid deposit is required 10 days prior to the event date. Pre-payment may be settled via credit card payment or direct wire transfer. Any pending charges or remaining overages will be charged/reimbursed at the conclusion of your event.

FINAL GUARANTEE:

A final guarantee is required 72 hours prior to the function. In the event that we are not notified, the attendance number shown on the contract will become the guarantee. Minimum spend pricing excludes 24% taxable service charge and 8.75% local sales tax. All room rental fees are subject to taxable 24% service charge and 8.75% local sales tax.

CANCELLATION POLICY:

The following cancellation fees will apply:

From date of receiving credit card guarantee: 25% of the Total

45 days prior: 50% of the total function revenue.

30 days prior: 75% of the total function revenue.

14 days prior: 100% of the total function revenue.



Please inquire with Vanessa Flores at vanessa.flores@marriott.com for current rates and availability.



MARQUIS VENDOR SERVICES

Create a unique experience during your next event with specialty lighting, décor and entertainment services. The Marriott Marquis has partnerships with San Francisco's best and most professional event vendors. Please inquire with Vanessa Flores at vanessa.flores@marriott.com, about any of our vendor services below:

- Audio Visual Services
- DJs, Live Bands and Performance Artists
- Furniture, Decor and Linen Rentals
- Photo Booths, Scribble Walls, Casino Tables, Games and more
- Floral Services
- Security Services
- Transportation Services



Please inquire with Vanessa Flores at vanessa.flores@marriott.com for current rates and availability.

