

# J. W. MARRIOTT SUITE

## PRESIDENTIAL SUITE

LOCATION – 3742

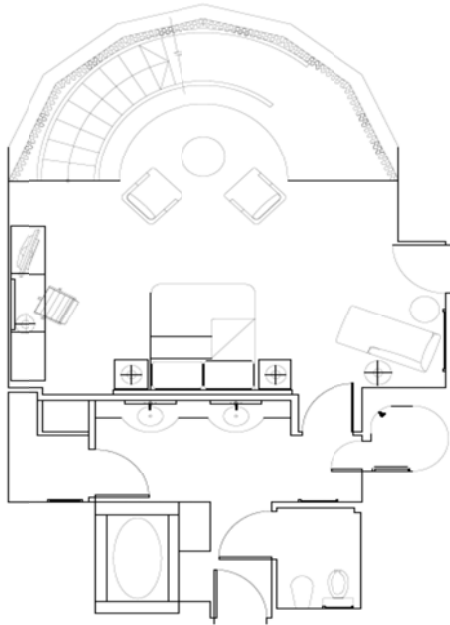
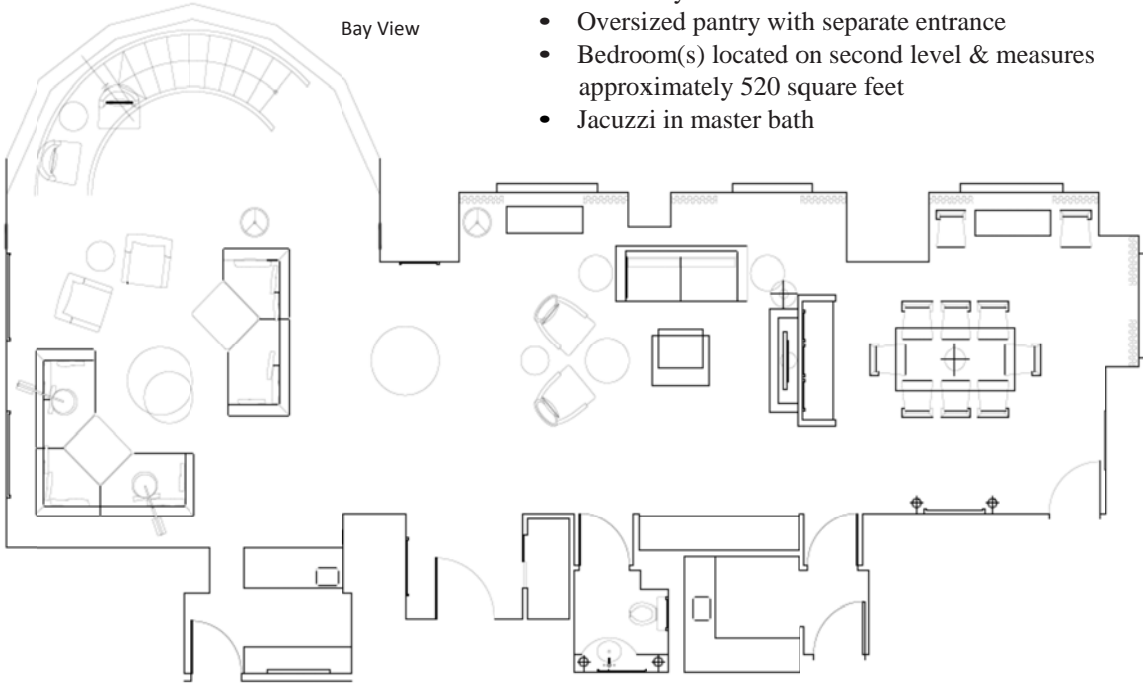
- One available and located on the 37th floor
- Parlor measures approximately 1400 square feet and can accommodate up to 100 people

### Special Features

- Duplex with circular stairway and 2-story bay window
- Formal dining room / conference table
- Entertainment / wet bar with separate entrance
- Grand foyer
- Oversized pantry with separate entrance
- Bedroom(s) located on second level & measures approximately 520 square feet
- Jacuzzi in master bath

City View

Bay View



# J. W. MARRIOTT SUITE

## PRESIDENTIAL SUITE

UPPER LEVEL

38TH FLOOR

# LILLIE HITCHCOCK COIT SUITE

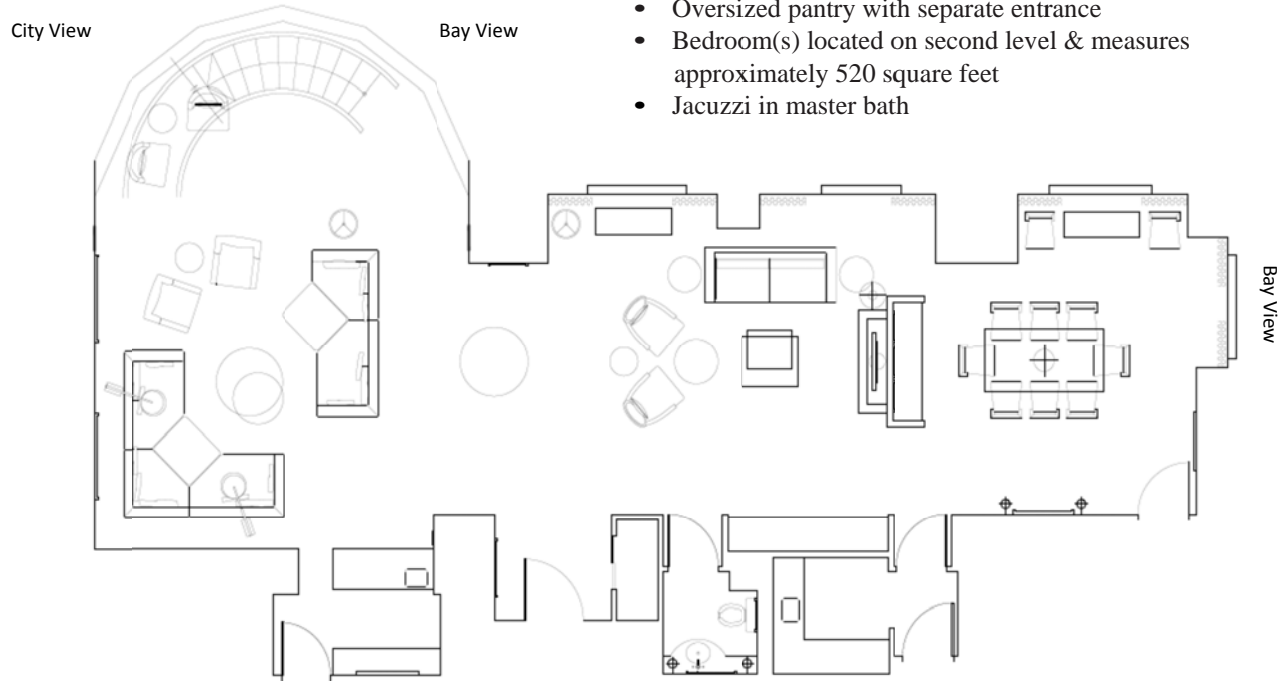
## PRESIDENTIAL SUITE

LOCATION – 3542

- One available and located on the 35th floor
- Parlor measures approximately 1400 square feet and can accommodate up to 100 people

### Special Features

- Duplex with circular stairway and 2-story bay window
- Formal dining room / conference table
- Entertainment / wet bar with separate entrance
- Grand foyer
- Oversized pantry with separate entrance
- Bedroom(s) located on second level & measures approximately 520 square feet
- Jacuzzi in master bath



## LILLIE HITCHCOCK COIT SUITE

PRESIDENTIAL SUITE  
UPPER LEVEL  
36TH FLOOR

# ANDREW SMITH HALLIDIE SUITE

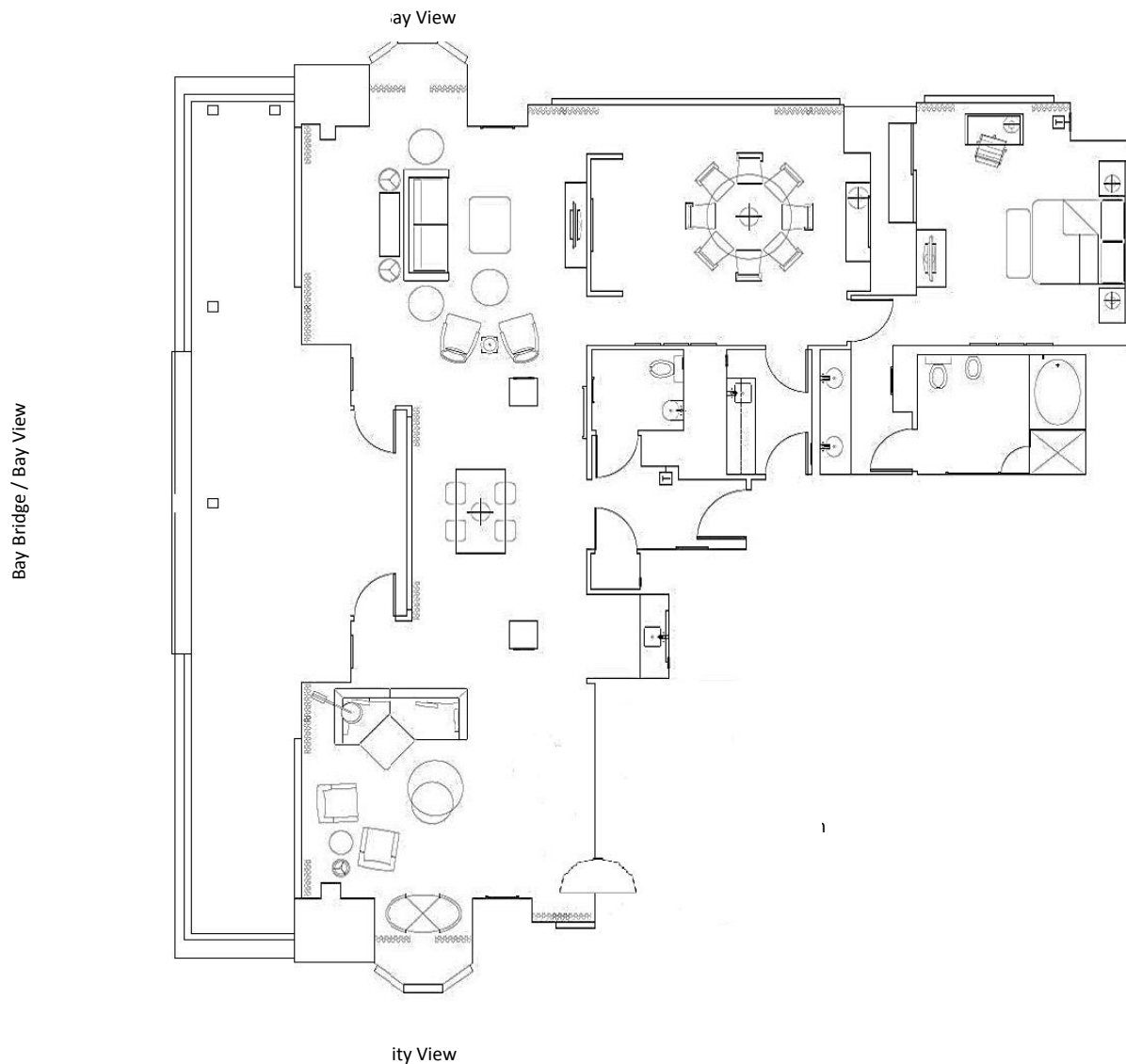
## PRESIDENTIAL SUITE

LOCATION – 3249

- One available and located on the 32nd floor
- Parlor measures approximately 1600 square feet and can accommodate up to 125 people
- Terrace measures approximately 400 square feet and can accommodate up to 30 people
- One bedroom suite
- Handicap Accessible

### Special Features

- Accessible Suite
- Formal dining room / conference table
- Entertainment / wet bar
- Grand foyer
- Oversized pantry with separate entrance
- Furnished terraces
- Connecting double / double bedded guest room available for an additional cost



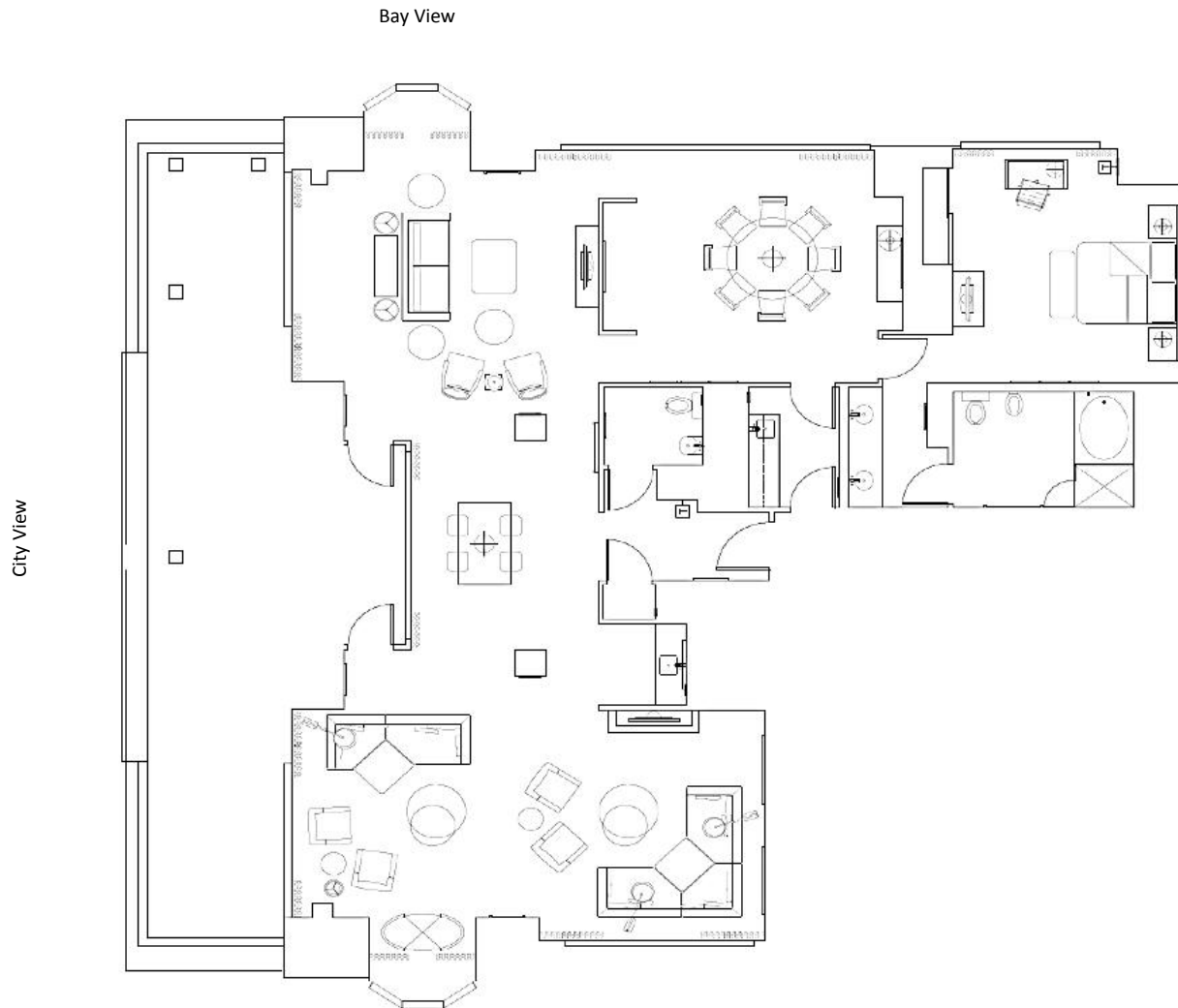
# JOSEPH BAERMANN STRAUSS SUITE

## PRESIDENTIAL SUITE (ONE BEDROOM ONLY) LOCATION – 3230

- One available and located on the 32nd floor
- Parlor measures approximately 1600 square feet and can accommodate up to 125 people
- Terrace measures approximately 400 square feet and can accommodate up to 30 people
- One bedroom suite

### Special Features

- Formal dining room / conference table
- Entertainment / wet bar
- Grand foyer
- Oversized pantry with separate entrance
- Furnished terraces



# ARTHUR PAGE BROWN SUITE

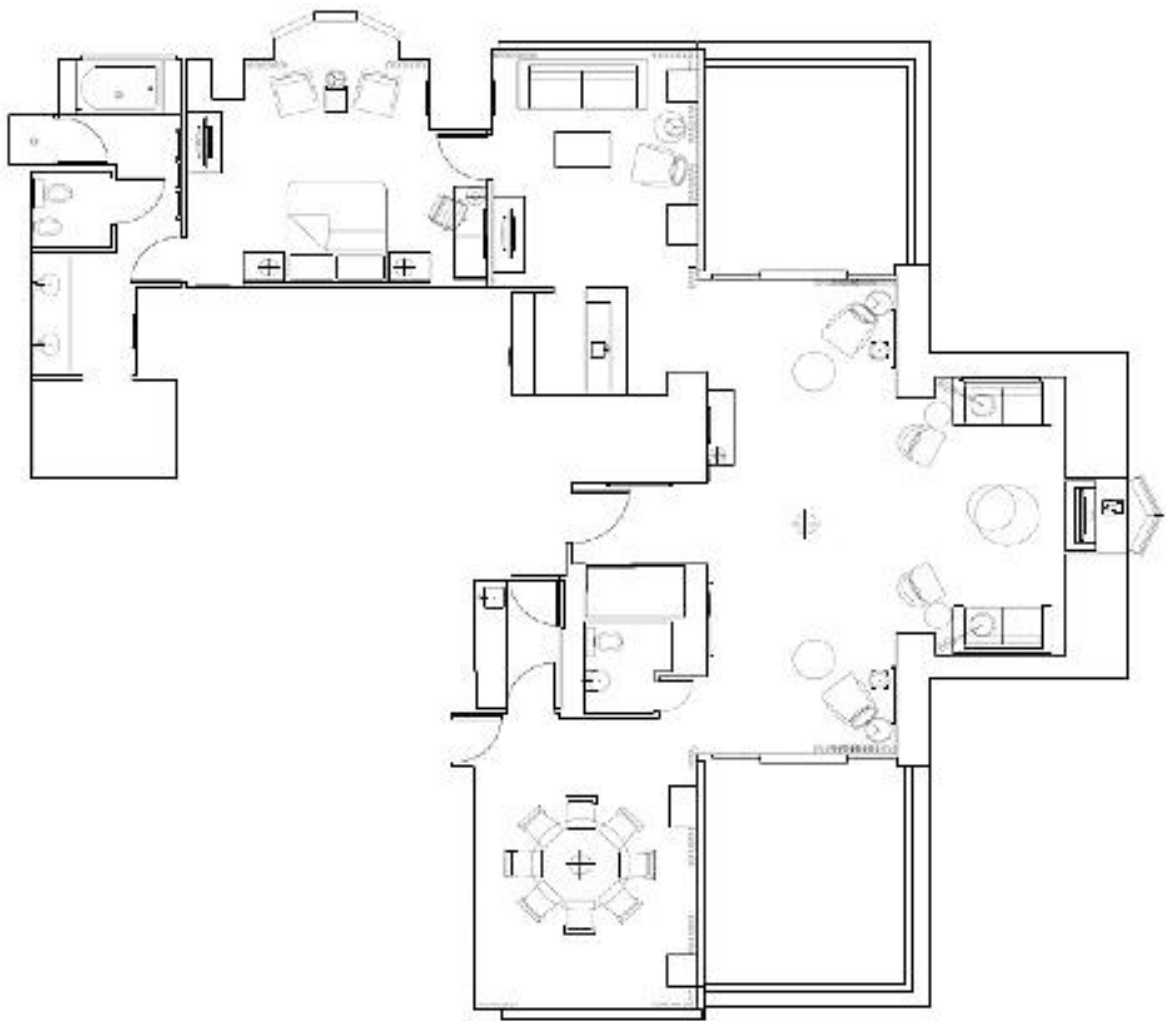
## PRESIDENTIAL SUITE

LOCATION – 3056

### Special Features

- One available and located on the 30th floor
- Parlor measures approximately 950 square feet and can accommodate up to 75 people
- Both terraces together measures approximately 400 square feet and can accommodate up to 30 people
- One bedroom suite
- Formal dining room / conference table
- Entertainment / wet bar
- Vaulted ceiling off entrance
- Pantry with separate entrance
- Two furnished terraces
- Connecting king bedded guest room available for an additional cost

City View



Bay Bridge / Bay View

Bay View

# WILLIAM HARMOND HALL SUITE

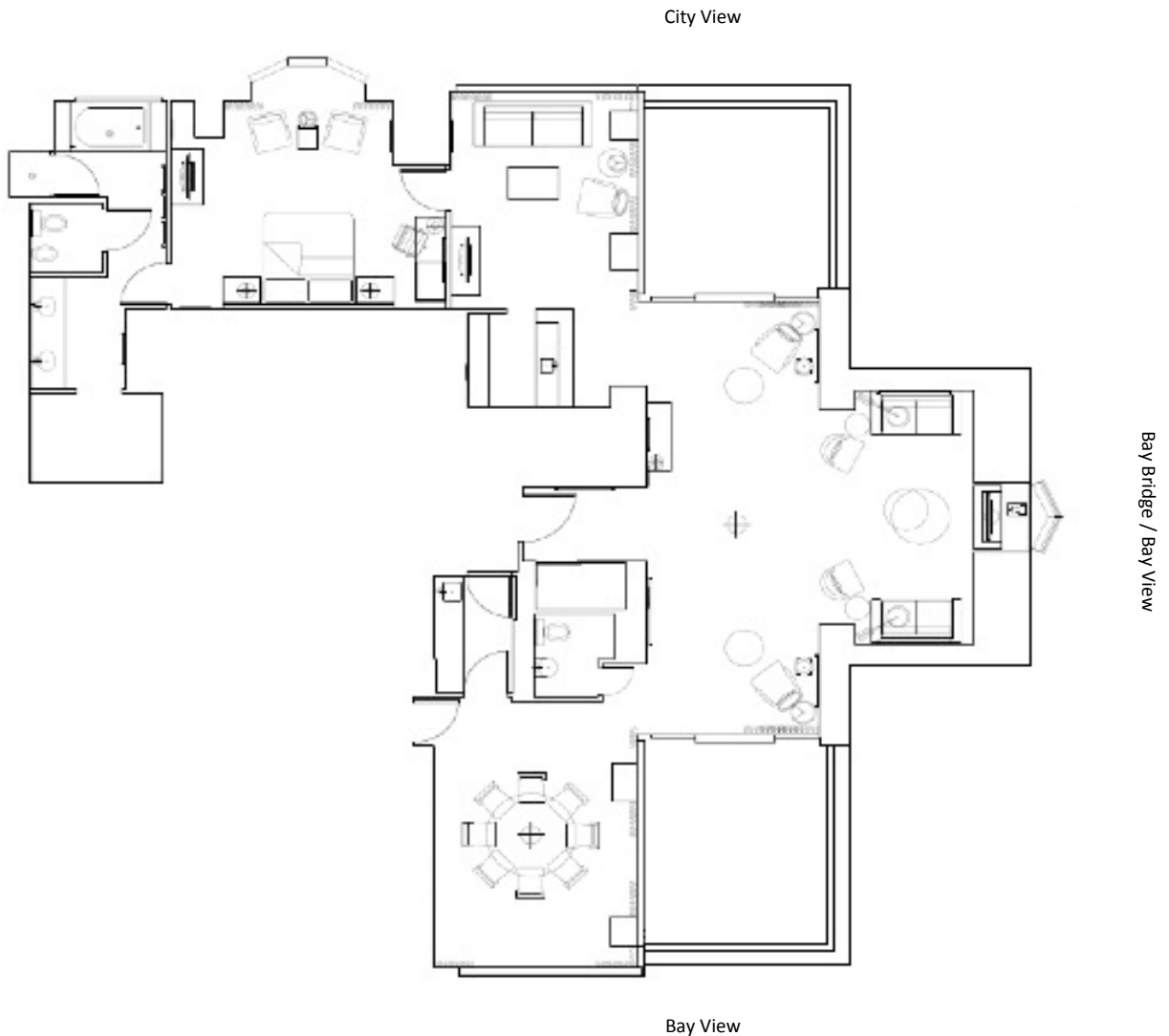
## PRESIDENTIAL SUITE

LOCATION – 3028

- One available and located on the 30th floor
- Parlor measures approximately 950 square feet and can accommodate up to 75 people
- Both terraces together measures approximately 400 square feet and can accommodate up to 30 people
- One bedroom suite

### Special Features

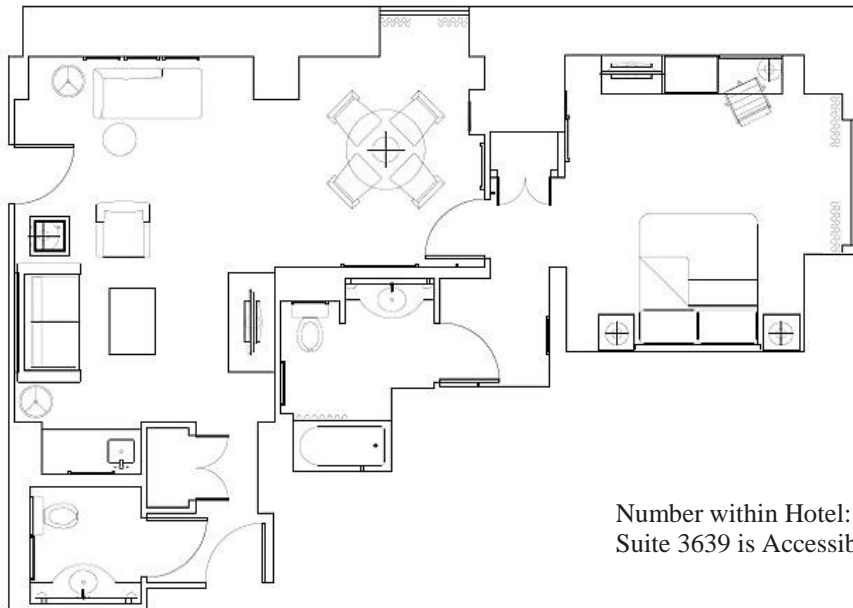
- Formal dining room / conference table
- Entertainment / wet bar
- Vaulted ceiling off entrance
- Pantry with separate entrance
- Two furnished terraces
- Connecting king bedded guest room available for an additional cost



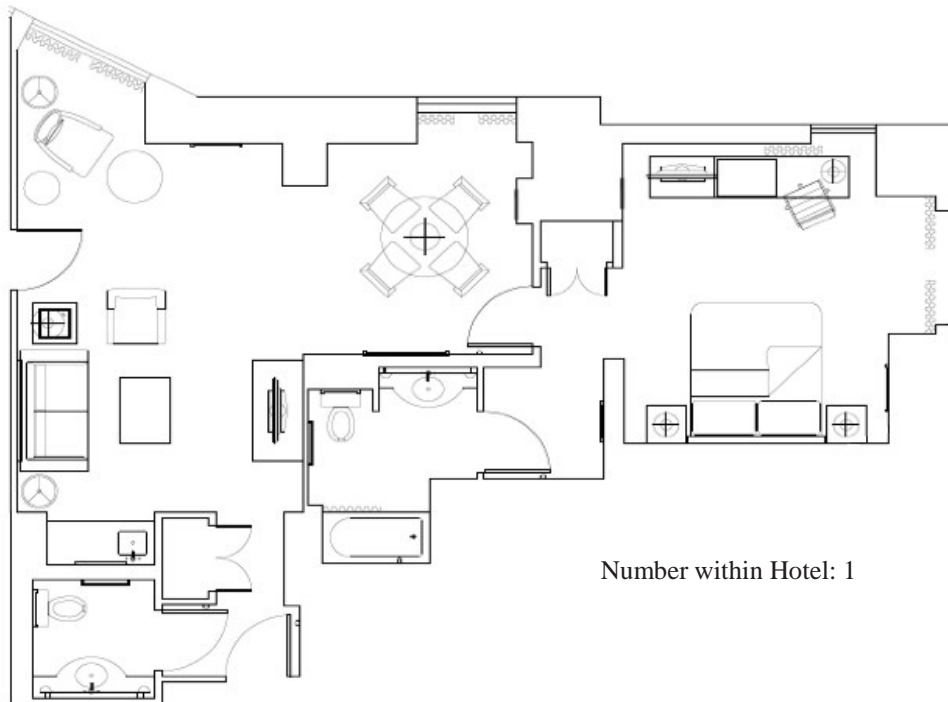
# LUXURY SUITES

## Special Features

- Parlor measures approximately 350 square feet and can accommodate up to 30 people
- One bedroom suite
- Connecting king bedded room available for an additional cost
- Dining area
- Wet bar



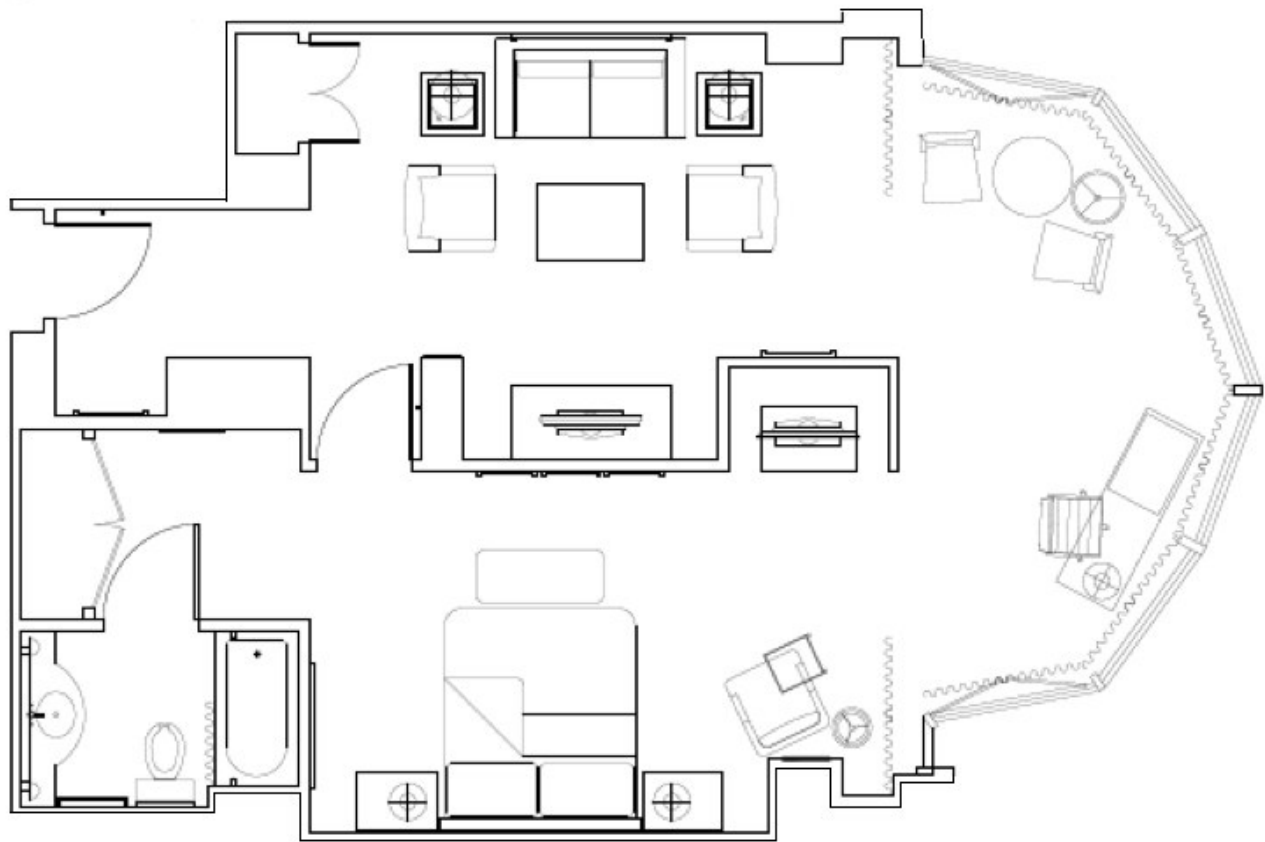
Number within Hotel: 4  
Suite 3639 is Accessible



Number within Hotel: 1

# LUXURY SUITES

- Luxury Suite 3440 located on the 34th floor
  - Parlor measures approximately 350 square feet and can accommodate up to 30 people on a flow basis
  - One bedroom suite
- Special Features**
- Dining area
  - Wet Bar
  - Bedroom Alcove





# MARRIOTT SUITES

- Four available and located on the 29th, 32nd, and 33rd floors
- Parlor measures approximately 500 square feet and can accommodate up to 35 people
- One bedroom suite

## Special Features

- Dining / conference table
- Wet bar



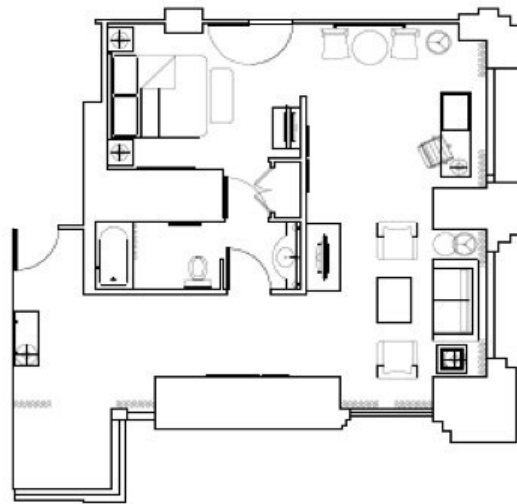
Number within Hotel: 2

Connecting king bedded guest room available for an additional cost



Number within Hotel: 1

Connecting double / double guest room available for an additional cost



Number within Hotel: 1

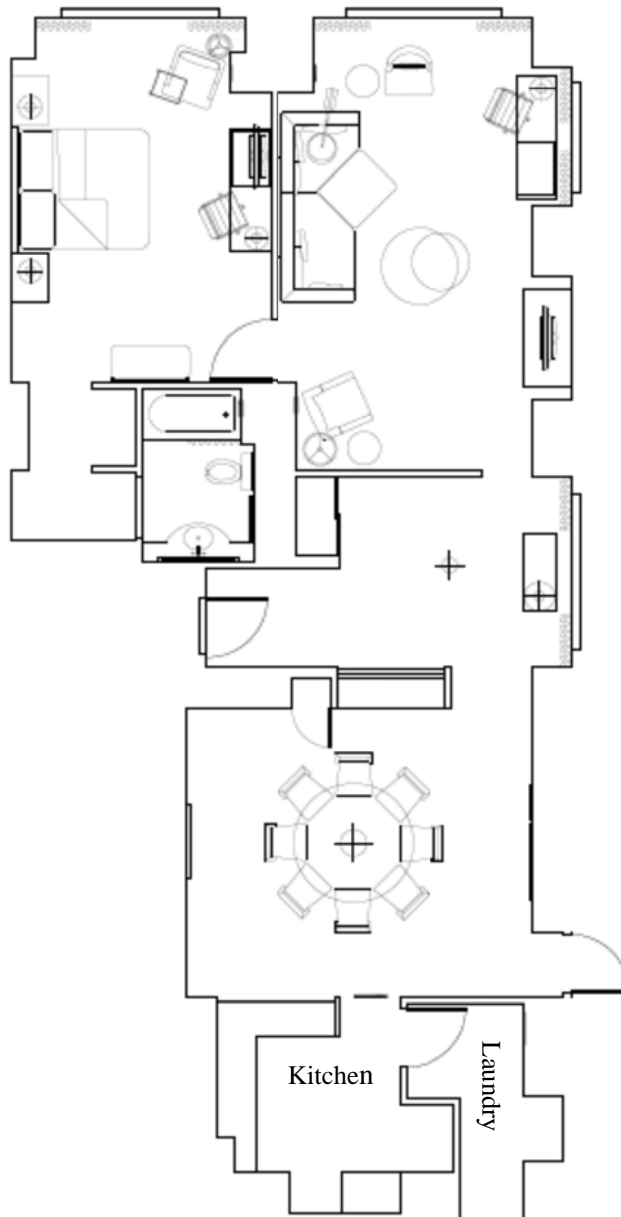
Connecting double/double guest room available for an additional cost

# MARRIOTT SUITES

- Marriott Suite 2048 located on the 20th floor
- Parlor measures approximately 500 square feet and can accommodate up to 35 people on a flow basis
- One bedroom suite
- Connecting double/double Junior Suite available for an additional cost

## Special Features

- Dining / conference table
- Full kitchen and laundry room

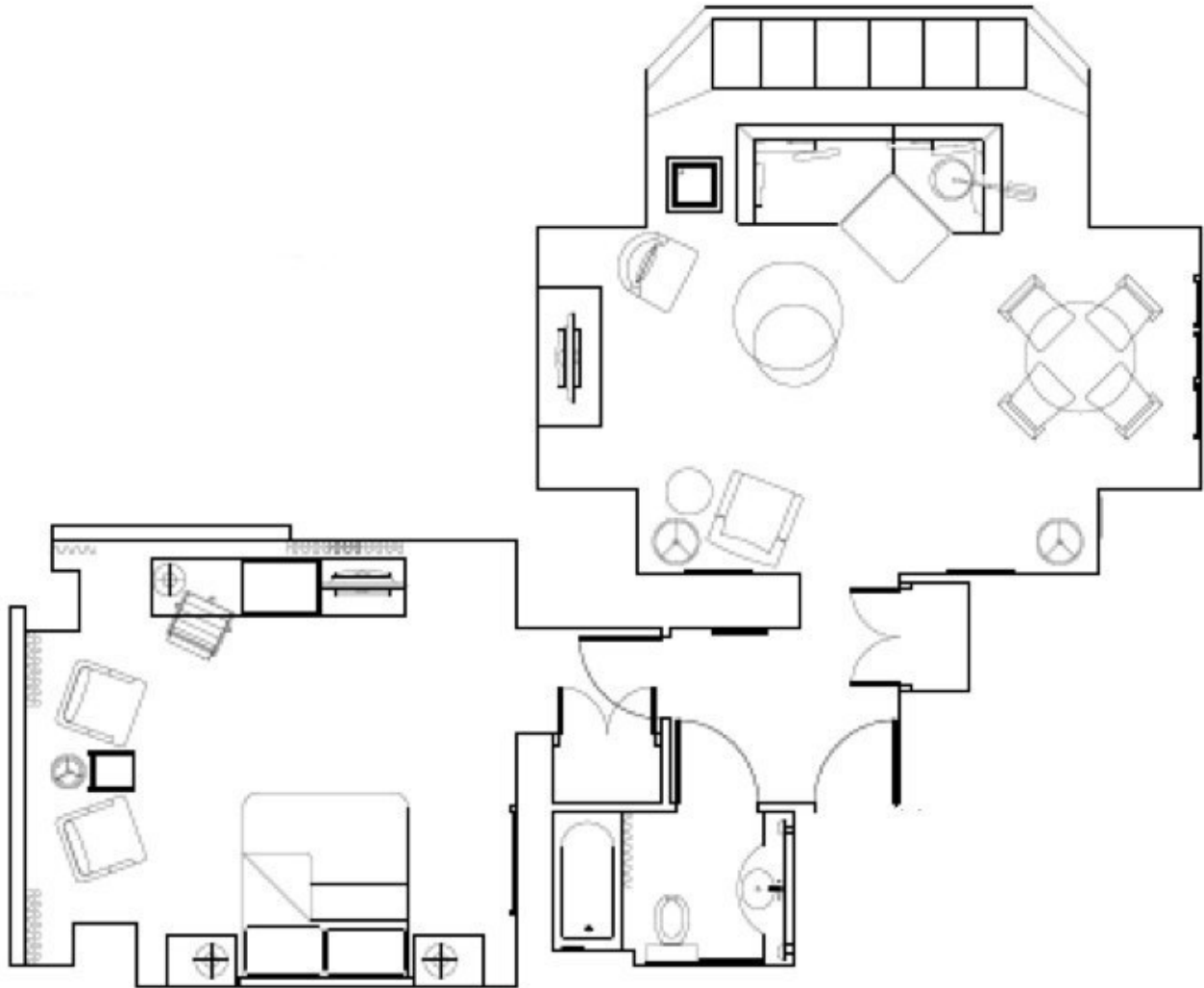


# CONCIERGE MARRIOTT SUITE

- One available and located on the 19th floor
- Parlor measures approximately 500 square feet and can accommodate up to 35 people
- One bedroom suite

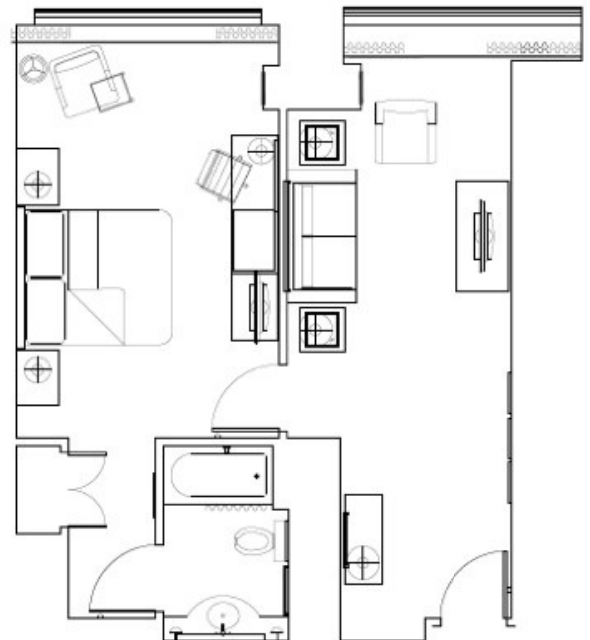
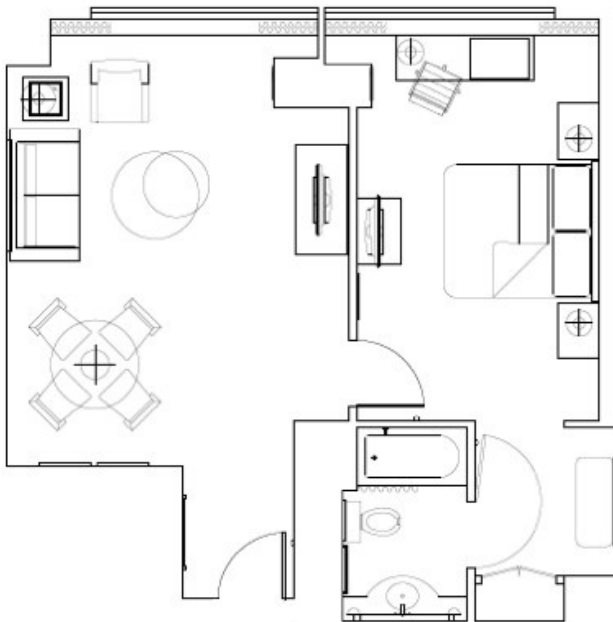
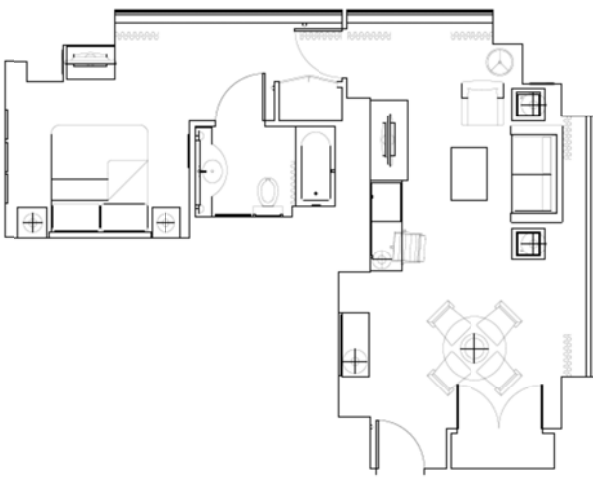
## Special Features

- Dining / conference table
- Wet bar



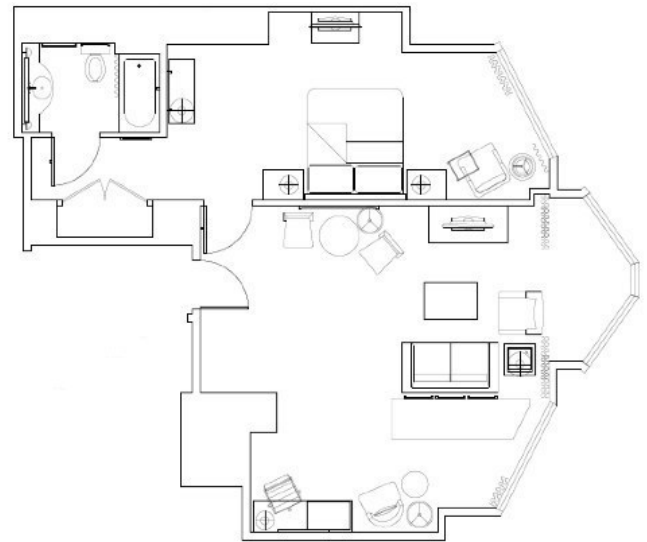
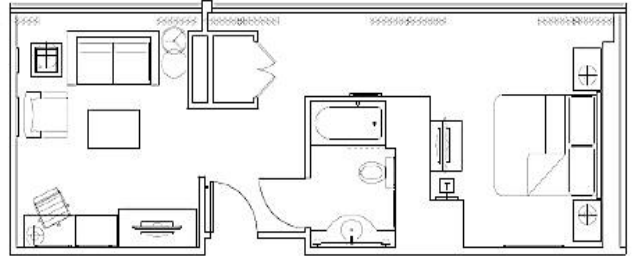
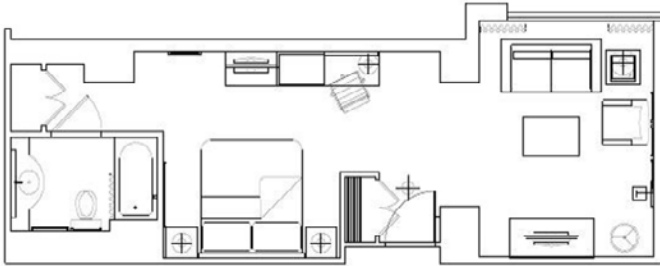
# JUNIOR SUITES

- Thirty-two available and located on various floors
- Parlor measures approximately 300 - 375 square feet and can accommodate up to 20 - 25 people
- Junior Suites do not have connecting rooms



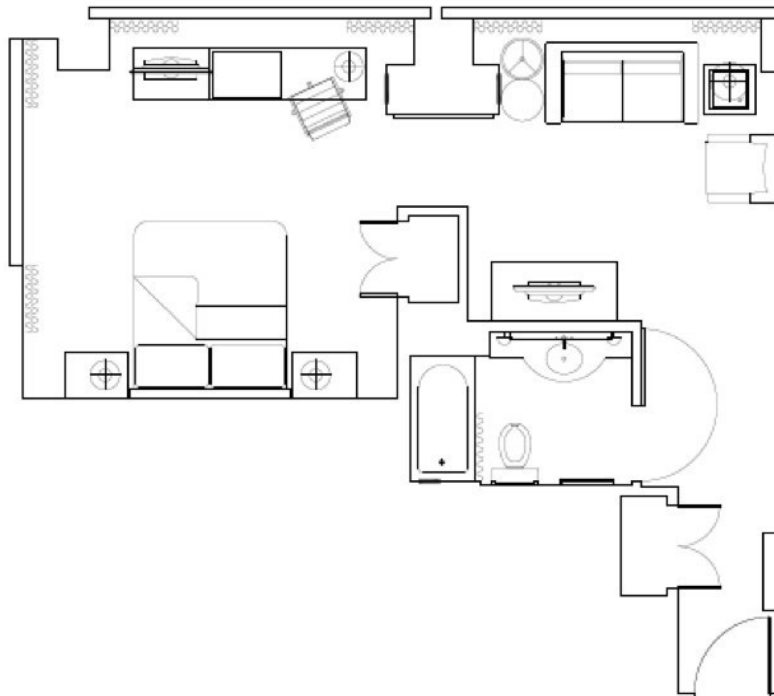
# JUNIOR SUITES

- Thirty-two available and located on various floors
- Parlor measures approximately 300 - 375 square feet and can accommodate up to 20 - 25 people
- Junior Suites do not have connecting rooms



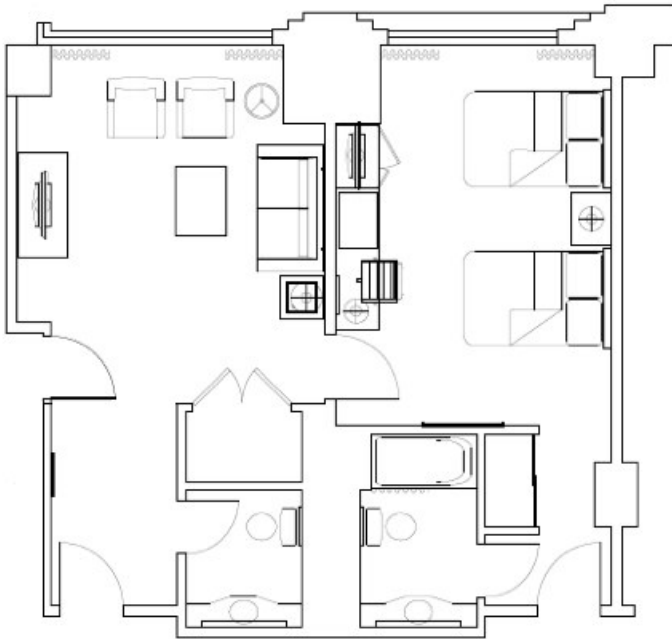
# JUNIOR SUITES

- Thirty-two available and located on various floors
- Parlor measures approximately 300 - 375 square feet and can accommodate up to 20 - 25 people
- Junior Suites do not have connecting rooms



# JUNIOR SUITES

- Thirty-two available and located on various floors
- Parlor measures approximately 300 - 375 square feet and can accommodate up to 20 - 25 people
- Junior Suites do not have connecting rooms



# JUNIOR SUITES

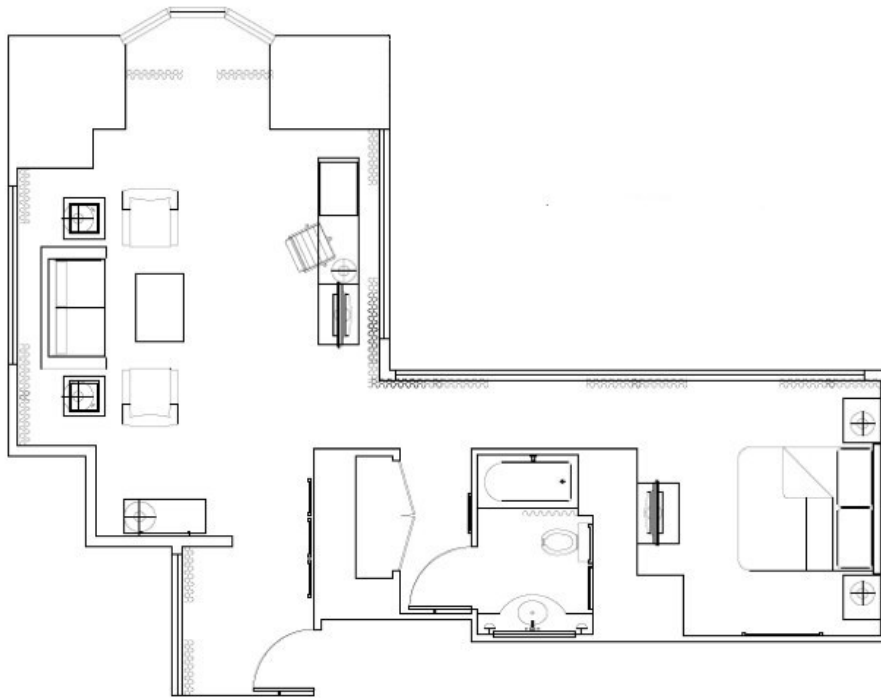
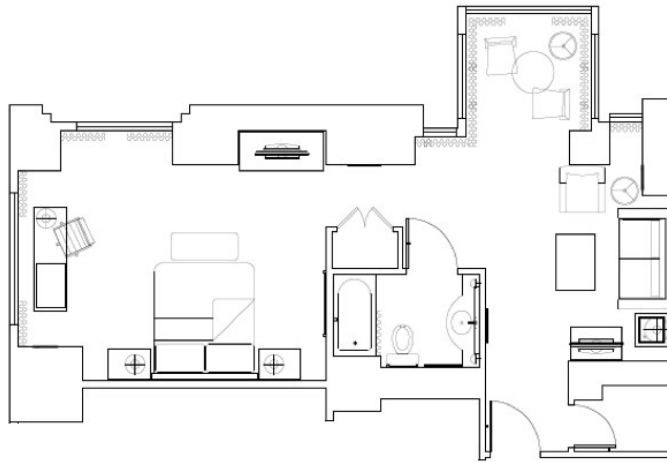
- Thirty-two available and located on various floors
- Parlor measures approximately 300 - 375 square feet and can accommodate up to 20 - 25 people
- Junior Suites do not have connecting rooms





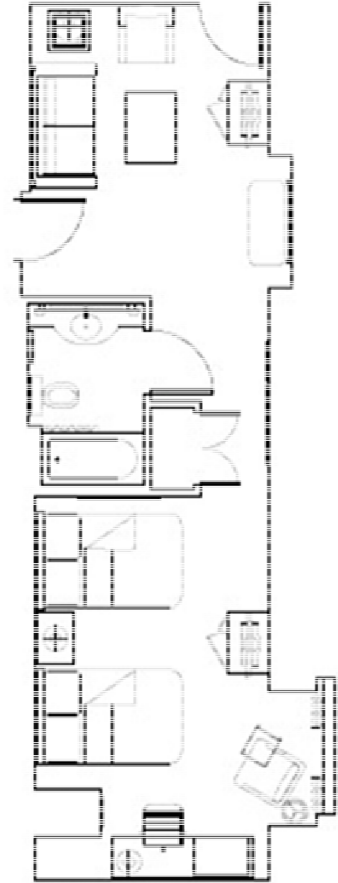
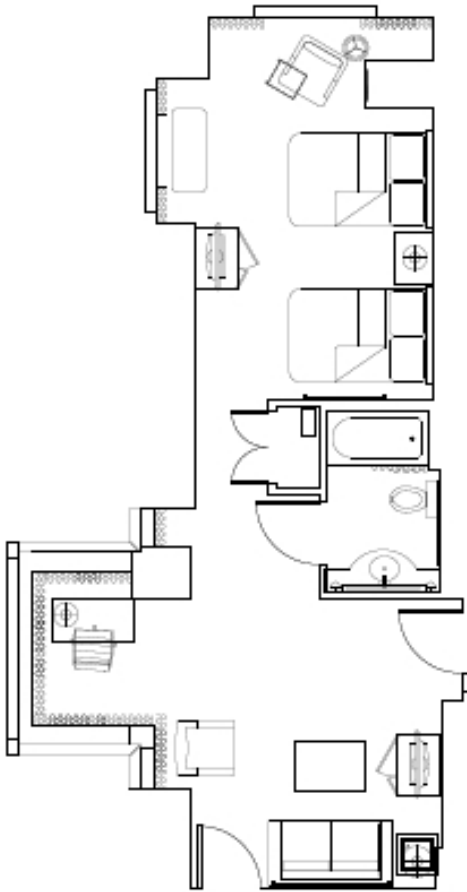
# JUNIOR SUITES

- Thirty-two available and located on various floors
- Parlor measures approximately 300 - 375 square feet and can accommodate up to 20 - 25 people
- Junior Suites do not have connecting rooms



# JUNIOR SUITES

- Thirty-two available and located on various floors
- Parlor measures approximately 300 - 375 square feet and can accommodate up to 20 - 25 people
- Junior Suites do not have connecting rooms

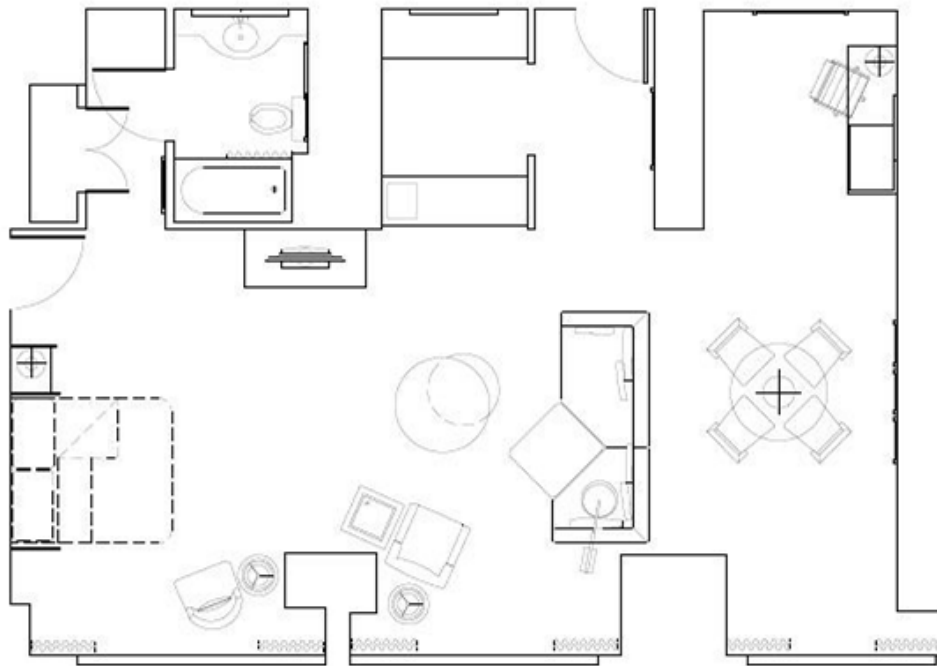


# THREE BAY HOSPITALITY SUITES

- Nine available and located on floors 21 through 30
- Parlor measures approximately 825 square feet and can accommodate up to 55 people
- Connecting king or double / double bedded guest room available for most suites for an additional cost

## Special Features

- Wet bar /pantry



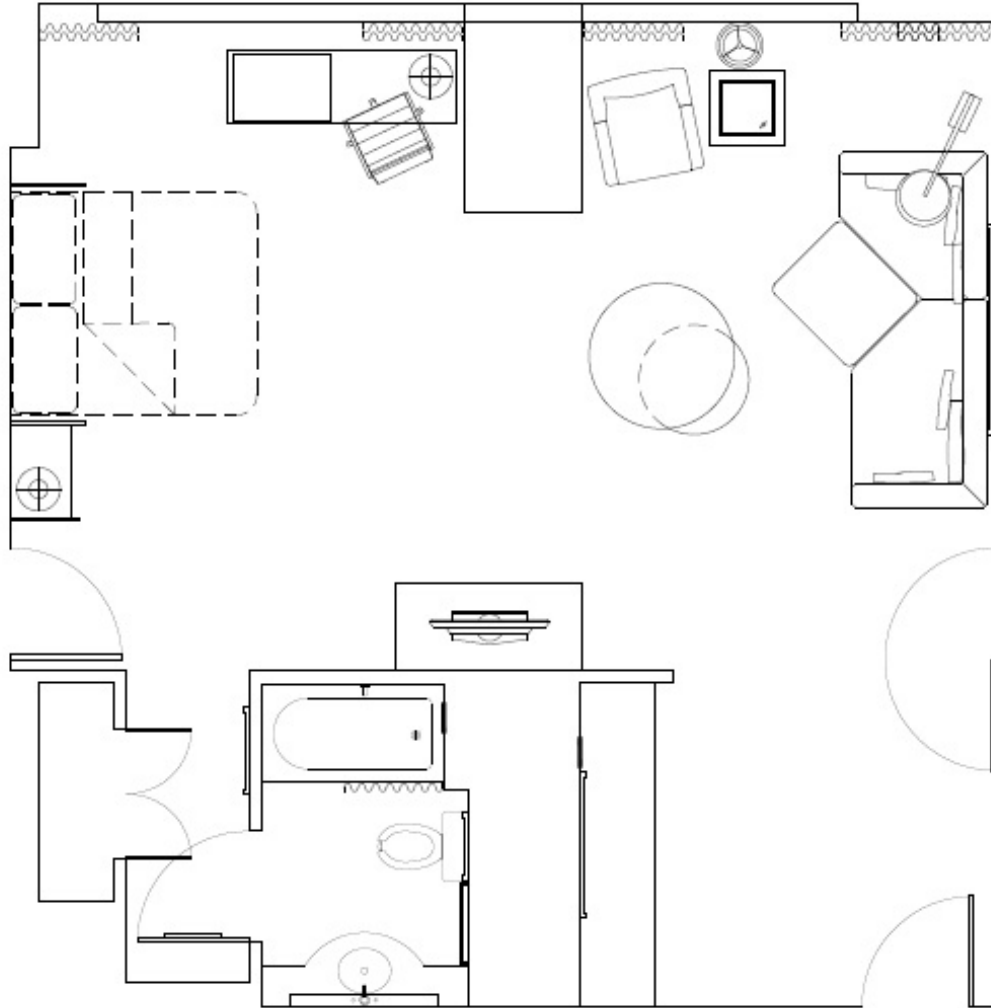
- One available on the 4<sup>th</sup> floor

# TWO BAY HOSPITALITY SUITES

- Three available and located on floors 4 and 5
- Parlor measures approximately 725 square feet and can accommodate up to 40 people
- Connecting king or double / double bedded guest room available for most suites for an additional cost

## Special Features

- Wet bar
- Oversized foyer

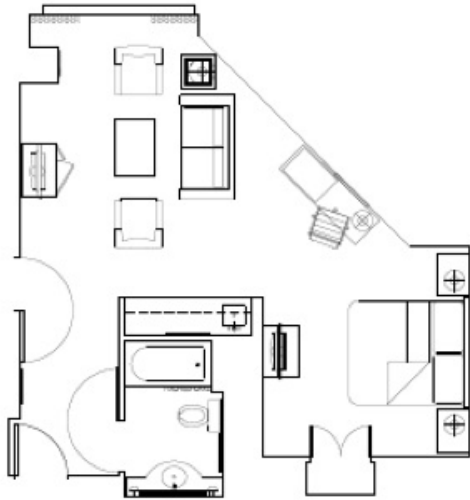


# EXECUTIVE KINGS SUITES

- Seventy-three available and located on various floors
- Parlor measures approximately 270-320 square feet and can accommodate up to 10 to 15 people
- Connecting king or double / double bedded guest room available for most suites for an additional cost

## Special Features

- Wet bar
- Bedroom alcove



# Deluxe King Room

- King rooms measure 320 square feet on average
- King rooms with pullout loveseat available upon request
- Connecting king or double / double bedded guest room available for an additional cost



## Double / Double and Queen / Queen Room

- Double rooms measure 320 square feet on average
- Double / Double and Queen / Queen available.

