

MAKE YOUR MARK



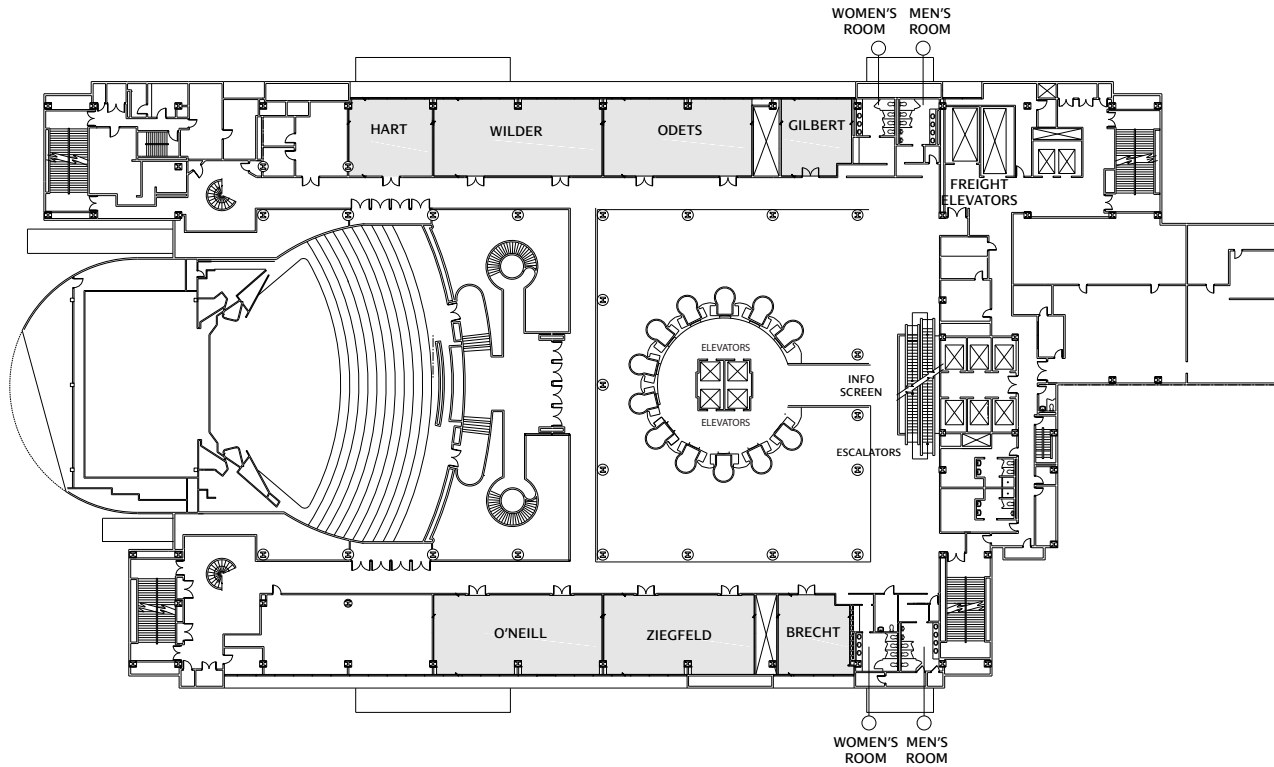
Marriott
MARQUIS
NEW YORK

1535 Broadway
New York, New York 10036
Phone 212-398-1900
Fax 212-704-8930
NYMarriottMarquis.com



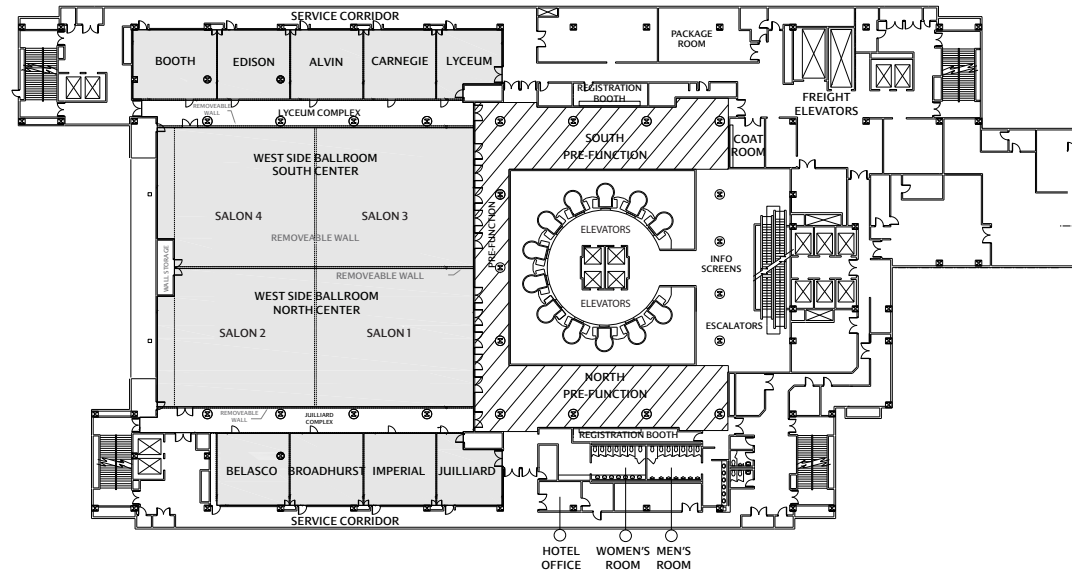
WHERE THE WHOLE WORLD MEETS.

FOURTH FLOOR



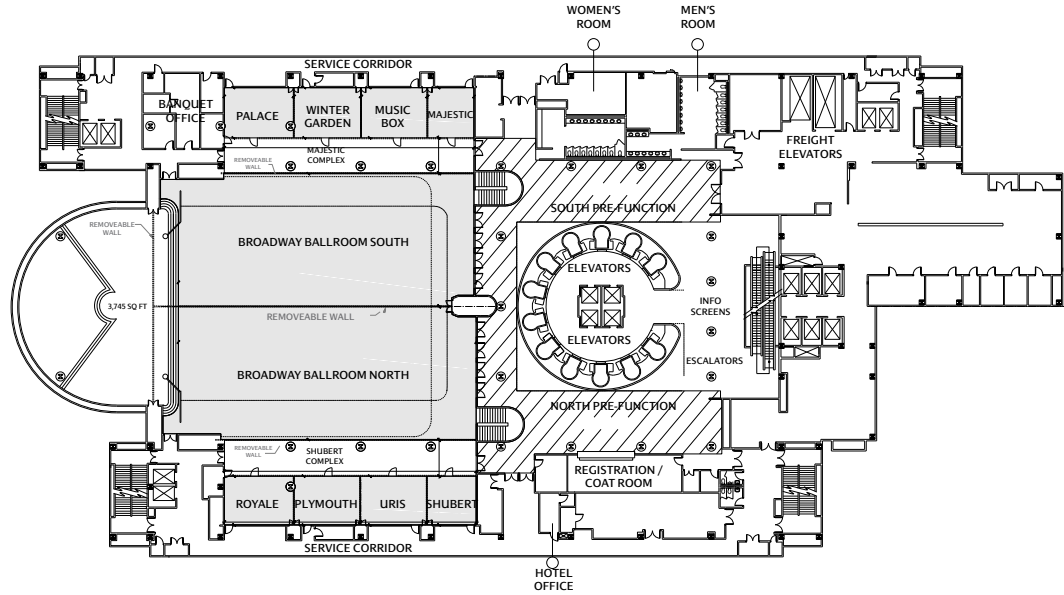
Meeting Room	Dimensions		Capacity					
	LxWxH	Sq. Ft.	Theater	Schoolroom	Conference	U-Shape	Reception	Banquet
FOURTH FLOOR								
Gilbert	25x28x11	576	60	42	24	24	50	50
Odets	25x55x11	1,216	120	84	44	44	100	100
Wilder	25x55x11	1,288	120	81	48	48	120	120
Hart	25x26x11	622	60	40	24	24	50	50
Brecht	25x28x11	566	60	42	24	24	50	50
Ziegfeld	25x50x11	1,181	120	80	44	44	120	120
O'Neill	25x55x11	1,297	120	75	48	48	120	120

FIFTH FLOOR



Meeting Room	Dimensions		Capacity					
	LxWxH	Sq. Ft.	Theater	Schoolroom	Conference	U-Shape	Reception	Banquet
FIFTH FLOOR								
	Dimensions (LxWxH)							
Westside Ballroom Entire	143x178x12	21,550	2,401	1,450	-	-	2,400	2,024
Westside Ballroom North & South Centers (Combined)	121x108x12	12,766	1,494	978	-	-	1,500	1,100
Westside Ballroom North Entire (Salons 1, 2 & Juilliard Complex)	133x89x12	10,413	1,189	700	-	-	1,200	850
Westside Ballroom North Center (Salons 1 & 2)	121x54x12	6,456	700	417	-	-	600	540
Salon 1	58x54x12	3,111	336	180	-	-	275	250
Salon 2	63x54x12	3,342	336	207	-	-	325	290
Westside Ballroom South Entire (Salons 3, 4 & Lyceum Complex)	143x89x12	11,144	1,212	700	-	-	1,200	890
Westside Ballroom South Center (Salons 3 & 4)	121x53x12	6,439	700	417	-	-	600	540
Salon 3	58x53x12	3,101	336	180	-	-	275	250
Salon 4	63x53x12	3,327	336	207	-	-	325	290
5th Floor Pre-Function		5,638	-	-	-	-	500	-
Lyceum Complex (Including Corridor)	143x36x10	4,835	420	258	-	-	400	360
Lyceum	25x25x10	599	60	30	24	21	50	40
Carnegie	28x25x10	718	66	39	28	24	75	50
Alvin	28x25x10	719	66	39	28	24	75	50
Edison	28x26x10	712	66	39	28	24	75	50
Booth	33x26x10	851	66	39	24	24	75	50
Juilliard Complex (Including Corridor)	133x36x10	3,984	373	219	-	-	350	280
Juilliard	26x25x10	589	60	36	24	24	50	40
Imperial	28x25x10	700	66	39	28	24	75	50
Broadhurst	28x25x10	700	66	39	28	24	75	50
Belasco	31x25x10	770	66	39	28	24	75	50

SIXTH FLOOR



Meeting Room	Dimensions		Capacity					
	LxWxH	Sq. Ft.	Theater	Schoolroom	Conference	U-Shape	Reception	Banquet
SIXTH FLOOR								
Broadway Ballroom Entire (Including Complexes, Balcony & Stage)	183x174x23	28,258	2,550 ⁽¹⁾	1,400 ⁽²⁾	-	-	2,800 ⁽³⁾	2,400 ⁽⁴⁾
Broadway Ballroom North & South Centers (Excluding Balcony & Stage)	125x110x23	13,135	1,606	826	-	-	1,700	1,170
Broadway Ballroom North Center	125x54x23	6,380	764	411	-	-	900	530
Broadway Ballroom North Entire (Including Shubert Complex)	125x87x23	9,672	1,120	625	-	-	1,250	850
Broadway South Center	125x54x23	6,372	764	411	-	-	900	530
Broadway Ballroom South Entire (Including Majestic Complex)	125x87x23	9,641	1,120	625	-	-	1,250	850
Broadway Ballroom Stage		3,745	-	-	-	-	-	-
Broadway Ballroom Pre-Function (Foyer)	104x151x10	12,458	-	-	-	-	600	-
Majestic Complex (Including Corridor)	101x33x10	3,300	335	175	-	-	350	270
Majestic	21x21x10	450	42	28	18	18	50	40
Music Box	25x21x10	527	60	36	24	24	60	50
Winter Garden	26x21x10	544	60	36	24	24	60	50
Palace	28x21x10	574	60	32	23	23	50	50
Shubert Complex (Including Corridor)	102x33x10	3,337	335	172	-	-	350	270
Shubert	20x21x10	425	42	24	18	18	50	40
Uris	26x21x10	553	60	36	24	24	60	50
Plymouth	26x21x10	542	60	36	24	24	60	50
Royale	29x21x10	603	60	32	23	23	50	50

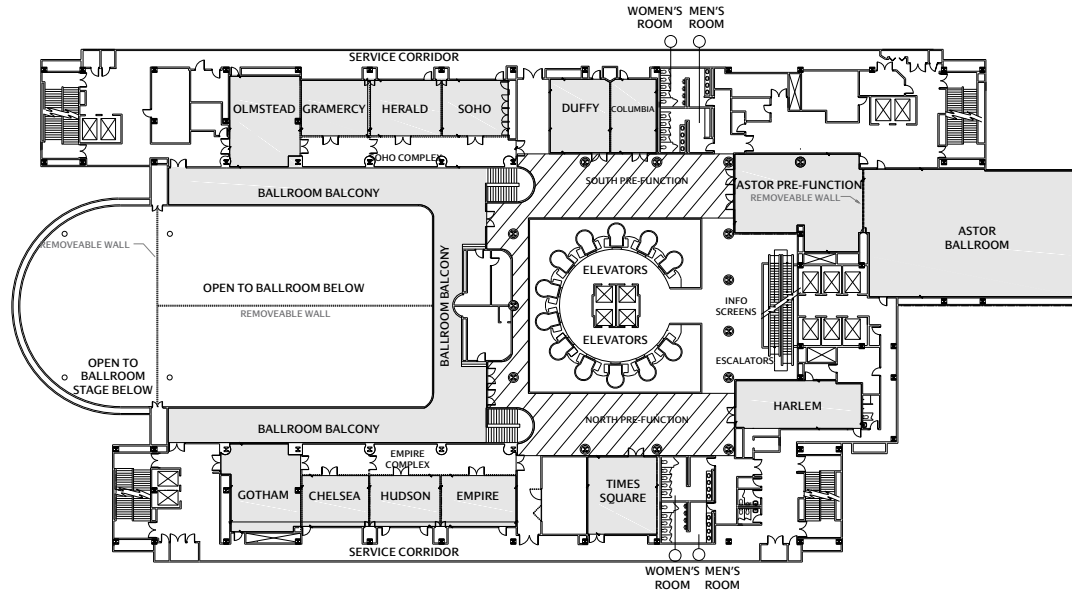
(1) Includes 300 on 7th Floor Balcony

(2) Includes 144 on 7th Floor Balcony

(3) Includes 300 on 7th Floor Balcony

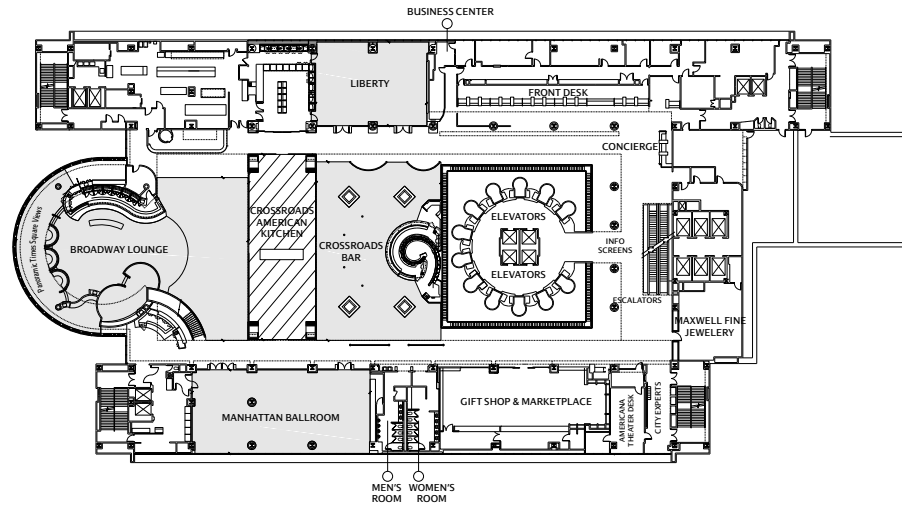
(4) Includes 300 on 7th Floor Balcony

SEVENTH FLOOR



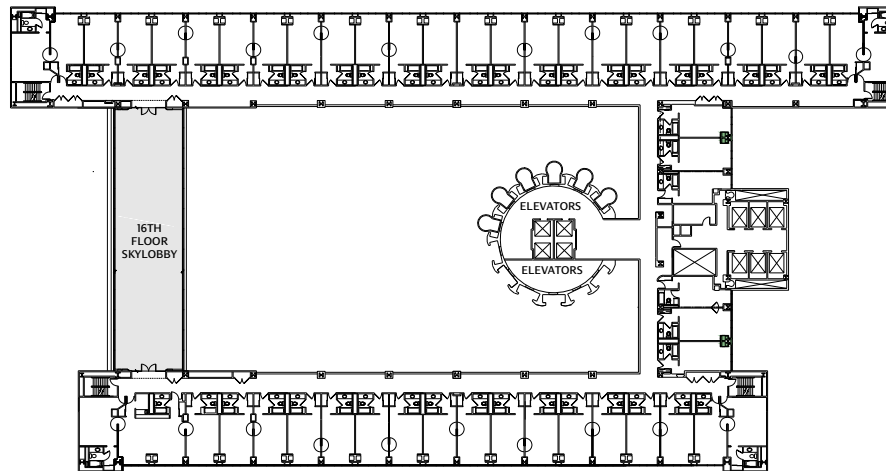
Meeting Room	Dimensions		Capacity					
	LxWxH	Sq. Ft.	Theater	Schoolroom	Conference	U-Shape	Reception	Banquet
SEVENTH FLOOR								
Broadway Ballroom Balcony	126x106x8	5,133	300	144	-	-	300	300
7th Floor Pre-Function		4,742	-	-	-	-	400	
Astor Ballroom	85x50x10	4,558	506	284	-	-	600	385
Astor Pre-Function	48x35x10	1,089	87	55	-	-	100	110
Astor Ballroom & Pre-Function (Combined)	133x55x10	5,647	593	339	-	-	700	485
Duffy & Columbia (Combined)	30x40x10	1,202	129	78	36	42	120	120
Duffy	30x22x10	671	75	51	28	27	50	50
Columbia	30x17x10	531	60	33	28	27	60	60
Soho Complex (Including Corridor)	35x113x10	3,721	308	176	-	-	350	270
Soho	22x27x10	630	60	36	24	24	60	60
Herald	22x28x10	638	60	36	24	24	60	60
Gramercy	22x26x10	591	60	36	24	24	60	60
Olmstead	35x28x10	961	85	60	32	32	75	60
Empire Complex (Including Corridor)	35x117x10	3,754	308	175	-	-	350	290
Empire	22x27x10	631	60	36	24	24	60	60
Hudson	22x28x10	646	60	36	24	24	60	60
Chelsea	22x25x10	593	60	36	24	24	60	60
Gotham	35x32x10	985	85	60	32	32	75	60
Times Square	30x26x10	797	103	51	28	30	80	80
Harlem	48x27x10	893	83	45	34	33	70	70

EIGHTH FLOOR



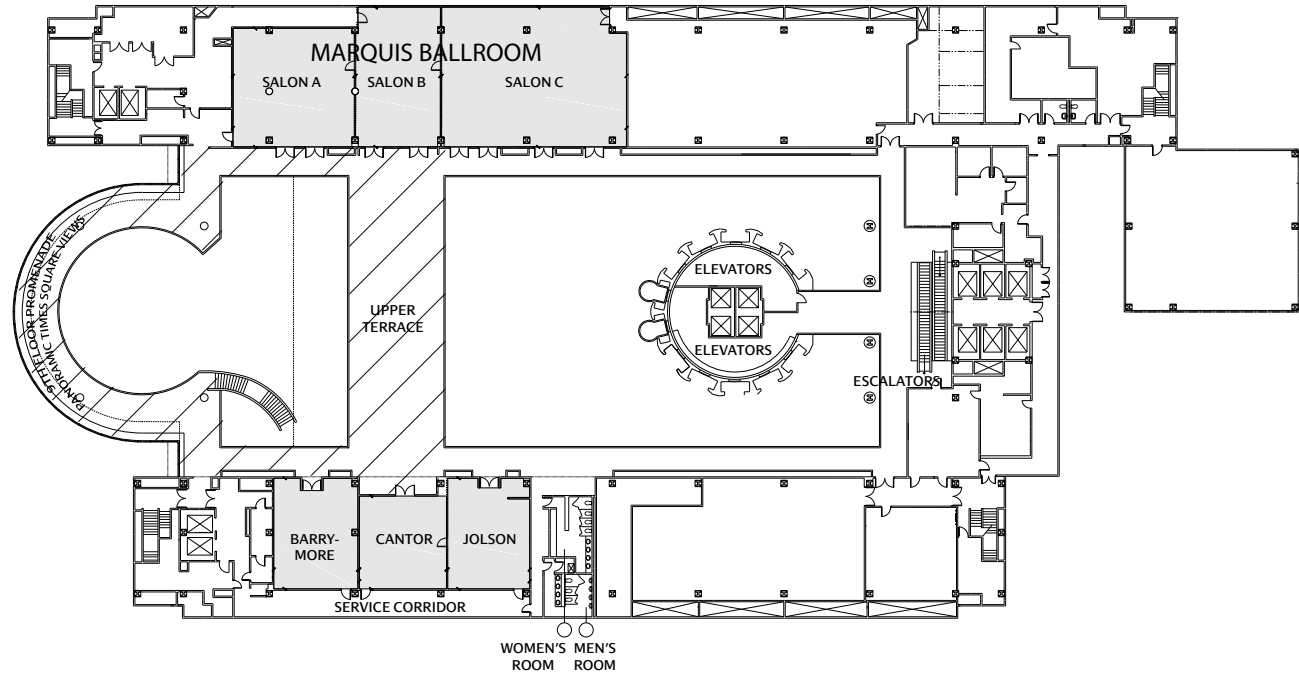
Meeting Room	Dimensions		Capacity					
	LxWxH	Sq. Ft.	Theater	Schoolroom	Conference	U-Shape	Reception	Banquet
EIGHTH FLOOR								
Liberty	38x60x10	1,977	168	108	48	48	175	150
Manhattan Ballroom	80x40x10	3,147	240	150	n/a	n/a	300	230
Broadway Lounge	81x60x22	6,000	-	-	-	-	1,000	1,000
Broadway Lounge/Manhattan Ballroom/9th Floor Promenade and Upper Terrace (Combined)	-	-	-	-	-	-	1,500	1,500

SIXTEENTH FLOOR



Meeting Room	Dimensions		Capacity					
	LxW	Sq. Ft.	Theater	Schoolroom	Conference	U-Shape	Reception	Banquet
SIXTEENTH FLOOR								
16th Floor Skylobby	26x105x15	2,729	300	171	-	-	-	200

NINTH FLOOR



Meeting Room	Dimensions		Capacity					
	LxWxH	Sq. Ft.	Theater	Schoolroom	Conference	U-Shape	Reception	Banquet
NINTH FLOOR								
Marquis Ballroom	44x124x9	4,698	409	230	n/a	n/a	375	350
Marquis A	39x38x9	1,246	85	48	30	28	80	80
Marquis B	39x34x9	1,268	116	60	30	31	90	100
Marquis C	44x54x9	2,160	160	104	44	44	225	170
Marquis A & B	44x72x9	2,556	214	110	n/a	n/a	180	180
Marquis B & C	44x86x9	3,410	303	153	n/a	n/a	315	260
Barrymore	31x27x9	844	80	51	24	24	60	60
Cantor	30x27x9	829	102	66	24	27	80	80
Jolson	33x25x9	785	91	48	24	27	60	60
Cantor & Jolson (Combined)	33x53x9	1,615	185	108	40	51	160	160
9th Floor Upper Terrace		2,756	-	-	-	-	300	120
9th Floor Promenade		2,503	-	-	-	-	150	120



Hold your event at the New York Marriott Marquis in Times Square and be in the heart of the excitement of New York City. Whether you're planning a national conference, a fundraising/corporate gala or simply a client presentation, it's the perfect place to make a great impression on your attendees. We've earned the Gold Key Award from *Meetings and Conventions* and the Award of Excellence from *Corporate & Incentive Travel*. With the help of our talented and creative event management team, you'll win some major accolades too.

ACCOMMODATIONS

49 floors • 1,901 rooms • 56 suites • Marble bathrooms • Individual climate control • 37" flat-screen TV • Cable TV with movie channels • Wireless and wired high-speed Internet access • Spacious work station desks with built-in control panel • iPod clock radio • Two-line telephone • Complimentary in-room coffee and tea service • Luxurious bedding • Safe • Iron and ironing board • Service animals allowed for persons with disabilities • Smoke-free hotel

RESTAURANT & LOUNGES

The View Restaurant and Lounge: enjoy stunning views of New York and a great continental menu in the city's only revolving rooftop restaurant (dinner and Sunday Mimosa Brunch) • Crossroads American Kitchen and Bar: serving modern classics in a dramatic atrium setting (breakfast, lunch and dinner) • Broadway Lounge: Eclectic cocktails and dining with views overlooking Times Square (dinner) • Starbucks®

RECREATION AND LEISURE

4,000 sq. ft. state-of-the-art fitness center • Driving range, jogging trail and biking nearby • Swimming nearby at the Manhattan Health Club Plaza

ATTRACTIONS

Broadway Theaters • Times Square • Central Park • Radio City Music Hall • Rockefeller Center • Intrepid Air and Space Museum • Jacob K. Javits Convention Center • Madison Square Garden • Empire State Building • Statue of Liberty • Ellis Island • Best Buy Theatre • American Museum of Natural History/Rose Center for Earth and Space • Restaurant Row • 5th Avenue Shopping • Macy's • ABC's Good

Morning America • Times Square Pedestrian Plaza • Discovery Times Square • Chelsea Piers • World-class shopping including, Swatch, Gap, Toys"R"Us, Sephora, Superdry, Aéropostale, L'OCCITANE, LOFT by Ann Taylor, H&M, The Disney Store, MAC Cosmetics, Forever 21 and American Eagle

GUEST SERVICES

Concierge desk • Full-service business center • Room service 6:00 a.m. – 2:00 a.m. • Safe deposit boxes • Boarding pass printer • Transportation kiosk for airport transfers • City Sights ticket desk • Theatre desk • Gift shop and marketplace with "grab and go" food options • ATM machine • 1,600-seat Marquis Theatre for live entertainment • Shoe shine stand • Valet parking • Valet dry cleaning • Complimentary daily newspaper • Complimentary wireless Internet access in 8th floor lobby and restaurants

MEETING FACILITIES

55 meeting rooms • More than 100,000 sq. ft. of total divisible meeting space • Largest venue is the newly renovated 29,000 sq. ft. Broadway Ballroom with a full production stage • Westside Ballroom with a capacity for 150 8x10 booths, maximum meeting space of 21,550 sq. ft. • Astor Ballroom is ideal for mid-sized meetings, and The Marquis Ballroom for more intimate events • Manhattan Ballroom for intimate dinners and receptions • Newly renovated Broadway Lounge for private and semi-private events with panoramic views overlooking Times Square • Wired and wireless high-speed Internet • Online event planning tools • Full service onsite audio-visual equipment and service • Video conferencing • Award-winning, creative and personalized menus • QuickGroup booking tool

NEW YORK MARRIOTT MARQUIS

1535 Broadway
New York, New York 10036
Phone 212-398-1900
Fax 212-704-8930
NYMarriottMarquis.com